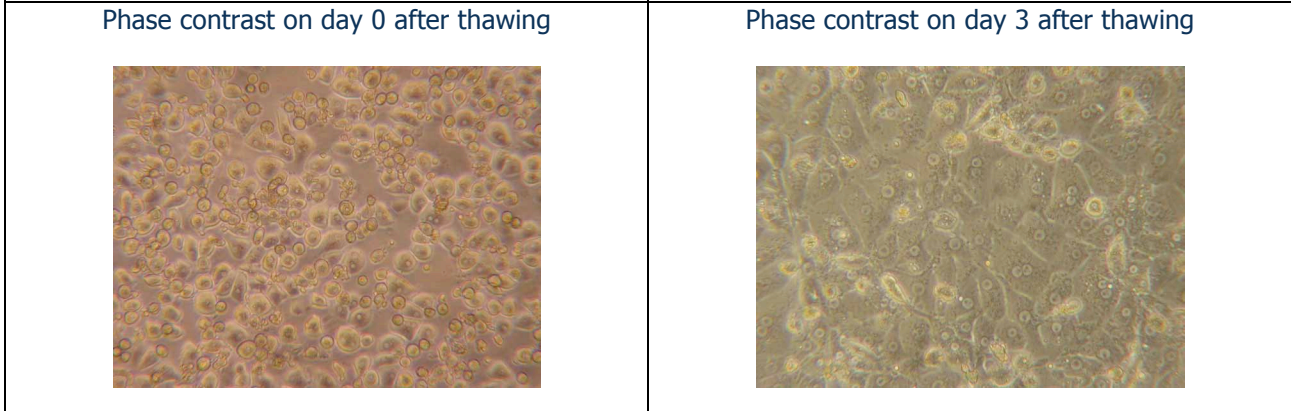


BHCP-I-T Cryopreserved Plateable Beagle Hepatocytes for Induction and Transporter assays
Cell Specification

Lot BH130226	Batch Release: May 27, 2014
--------------	-----------------------------

Species: Beagle	Gender: female
	Age: 1 year 3 months

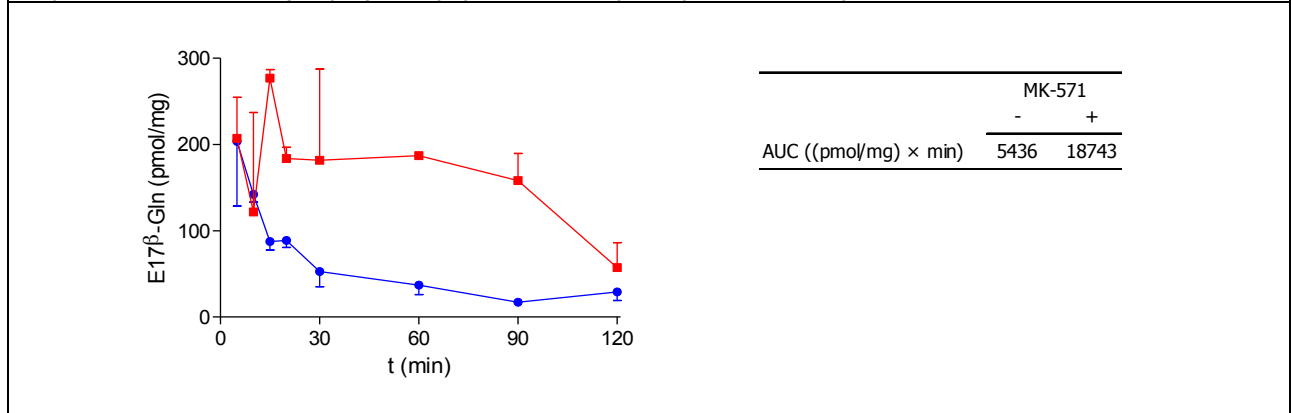
Cryopreservation: Date: February 26, 2013 Amount per vial: 10 x 10 ⁶ cells	Thawing: Post-thaw viability: 71 % Post-thaw yield per vial: 7.9 x 10 ⁶ cells Recovery: 79 %
---	--



Recommended seeding density on collagen-coated plates: 283,000 cells per cm²
Culture in Human Hepatocyte Maintenance Medium (HHMM).

CYP P450 activity in culture after thawing:	pmol/(mg × min)	x-fold induction
Ethoxyresorufin-O-deethylation:		
Induction with 10 µM beta-naphthoflavone	21.7 ± 4.0	20.9
Induction with 25 µM beta-naphthoflavone	48.8 ± 19.6	46.7

Efflux Transporter: after 5 min preincubation with 10 µM Estradiol-17-beta-glucuronide (E17β-Gln), Multidrug resistance-related protein 2 (Mrp2) mediated Efflux of E17β-Gln with or without the specific Mrp2 inhibitor MK571 (10 µM) in cryopreserved hepatocytes was analyzed.



Note: Yield, viability, recovery and activity assays were performed at PRIMACYT using PRIMACYT's manual for thawing, plating and culture of primary cryopreserved hepatocytes.