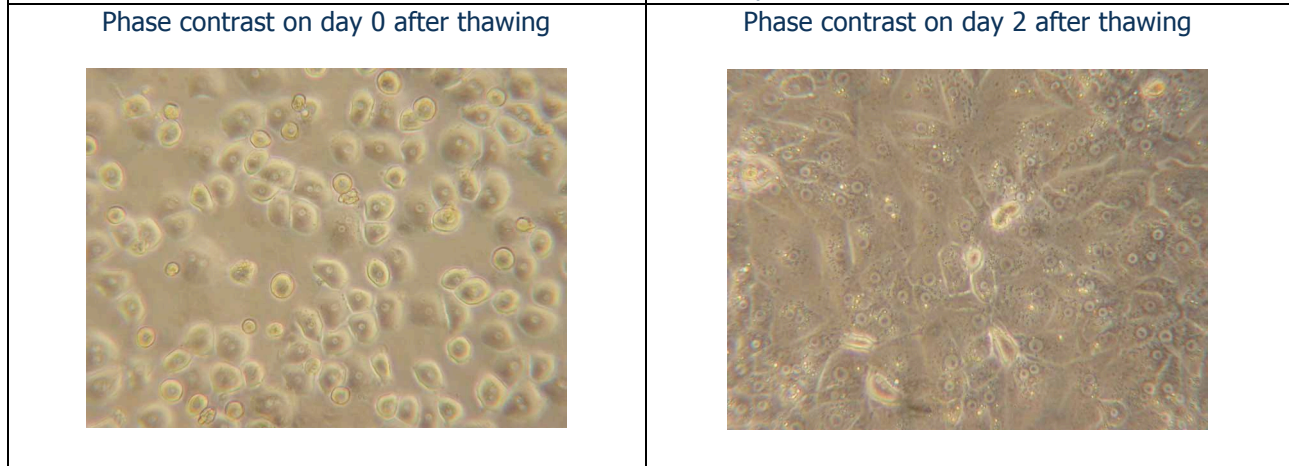


**CHCP-I-T Cryopreserved Plateable Cynomolgus Hepatocytes for Induction and Transporter assays**  
**Cell Specification**

Lot CH130515-1	Batch Release: July 09, 2013
----------------	------------------------------

Species: <i>Macaca fascicularis</i> Gender: female      Age: 5 years 2 months	Serology: negative for Filovirus/Ebola-like, SRV, SIV, STLV-1
--	---

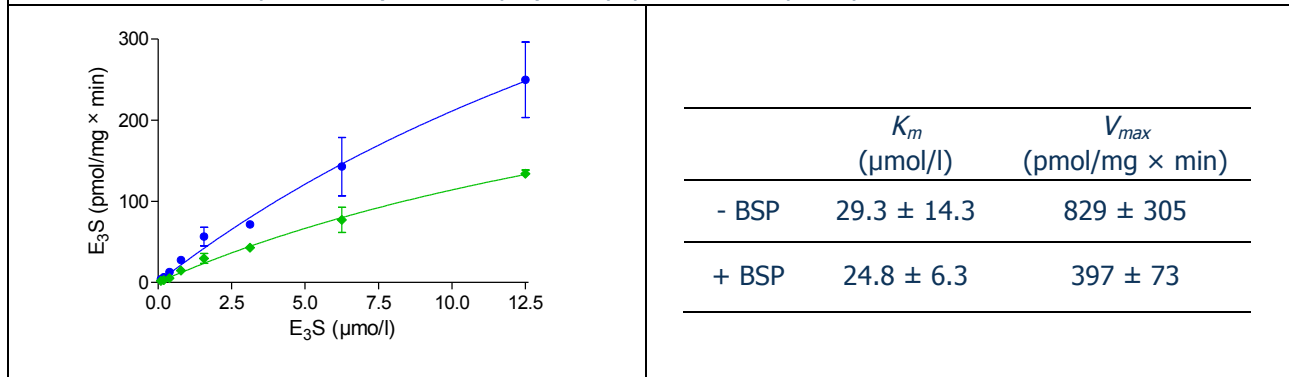
Cryopreservation: Date: May 05, 2013 Amount per vial: 10 x 10 <sup>6</sup> cells	Thawing: Post-thaw viability: 87 % Post-thaw yield per vial: 8.4 x 10 <sup>6</sup> cells Recovery: 84 %
--	--



Recommended seeding density on collagen-coated plates: 210,000 cells per cm<sup>2</sup>  
Culture in Human Hepatocyte Maintenance Medium (HHMM).

CYP P450 activity in culture after thawing: Ethoxyresorufin-O-deethylation: Induction with 10 µM beta-naphthoflavone Induction with 25 µM beta-naphthoflavone	pmol/(mg × min)	x-fold induction
	9.1 ± 2.2 13.1 ± 3.7	5.4 7.7

Uptake transporters: uptake of Estrone 3-sulfate (E<sub>3</sub>S) with (green) or without (blue) competitive inhibitor Bromosulphophthalein (BSP, 100 µM) in cryopreserved hepatocytes after 2 min incubation.



Note: Yield, viability, recovery and activity assays were performed at PRIMACYT using PRIMACYT's manual for thawing, plating and culture of primary cryopreserved hepatocytes.