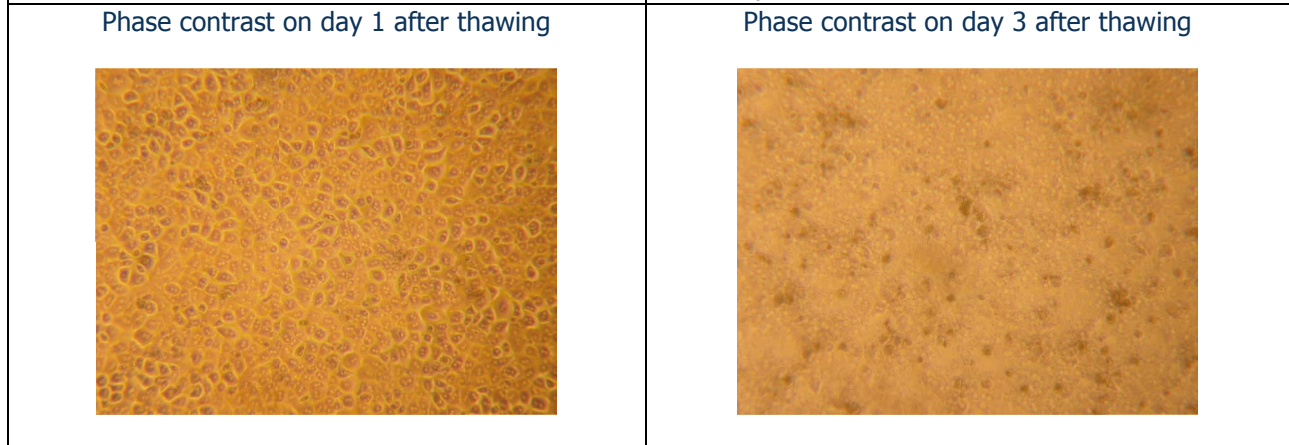


CHCP-I-T Cryopreserved Plateable Cynomolgus Hepatocytes for Induction and Transporter assays
Cell Specification

Lot CH121011-2	Batch Release: November 13, 2012
----------------	----------------------------------

Species: <i>Macaca fascicularis</i> Gender: male Age: 6 years 7 months	Serology: negative for Filovirus/Ebola-like, SRV, SIV, STLV-1
--------------------------------------------------------------------------------	---------------------------------------------------------------

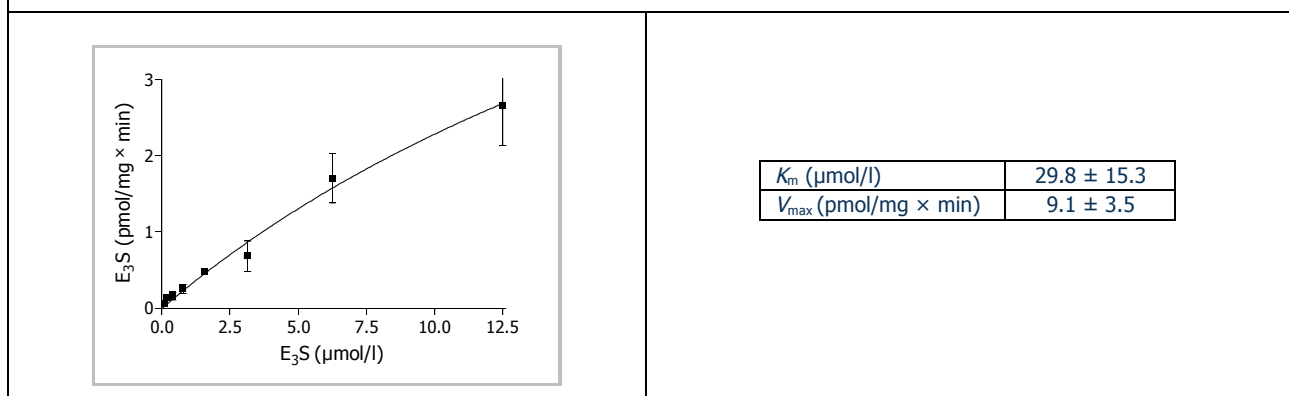
Cryopreservation: Date: October 11, 2012 Amount per vial: 10 x 10 ⁶ cells	Thawing: Post-thaw viability: 90 % Post-thaw yield per vial: 5.8 x 10 ⁶ cells Recovery: 58 %
--------------------------------------------------------------------------------------------	------------------------------------------------------------------------------------------------------------------



Recommended seeding density on collagen-coated plates: 290,000 cells per cm²
Culture in Human Hepatocyte Maintenance Medium (HHMM).

CYP P450 activity in culture after thawing: Ethoxyresorufin-O-deethylation: Induction with 10 µM beta-naphthoflavone Induction with 25 µM beta-naphthoflavone	pmol/(mg × min)	x-fold induction
	1.8 ± 0.1 2.3 ± 0.1	10.6 13.6

Uptake transporters: uptake of Estrone 3-sulfate (E₃S) in cryopreserved hepatocytes after 2 min incubation.



Note: Yield, viability, recovery and activity assays were performed at PRIMACYT using PRIMACYT’s manual for thawing, plating and culture of primary cryopreserved hepatocytes.