

Subcellular fractions	
Lot Rainbow trout 180216 (Pool of 6)	Batch Release: June 08, 2018

Species: Rainbow trout ( <i>Oncorhynchus mykiss</i> ) Strain: Christophersen, Bornhoeved Supplier: Fish breeding Christophersen Acclimation temperature: 13.2 ± 1.3 °C Age: approx. 2 years	Number and gender of animals: 6 (3 female, 3 male) sexual immature All animals were kept under controlled housing conditions at Fraunhofer EMB in Lübeck.
---	--

**Animal characteristics:**

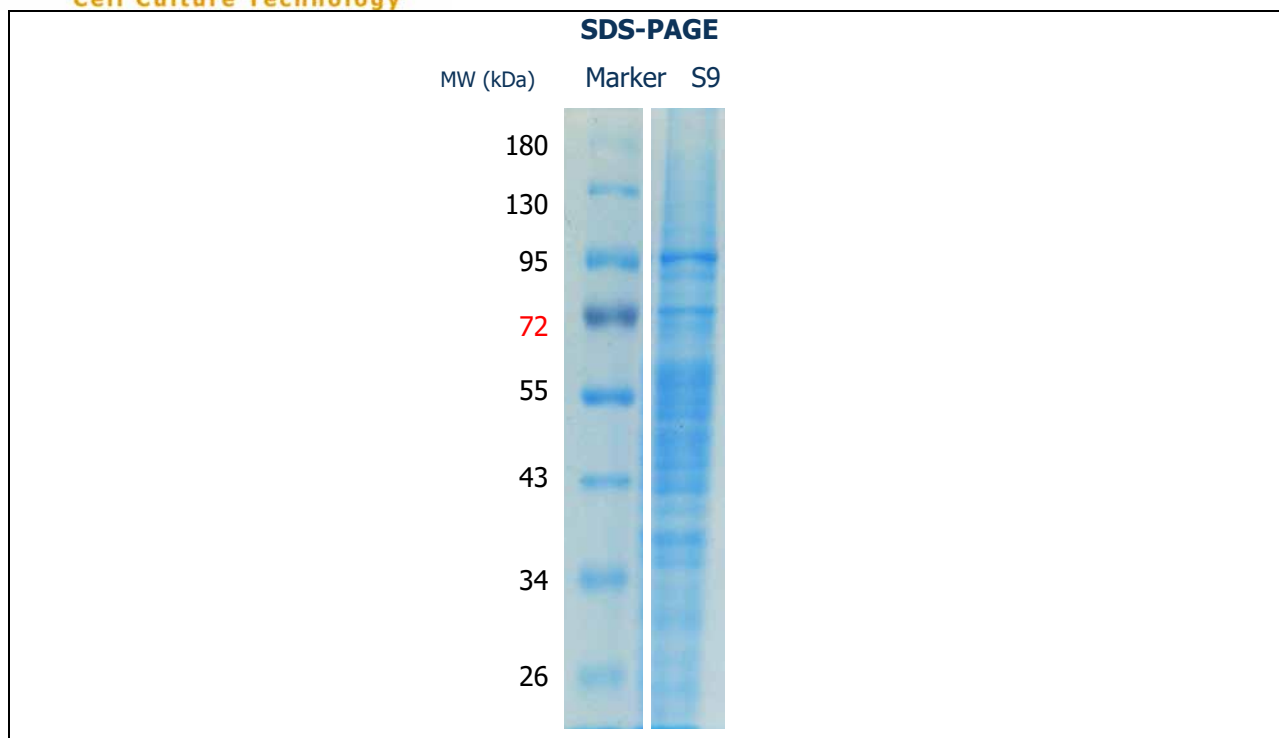
Donor	1	2	3	4	5	6
Gender	male			female		
Fish weight (g)	400	302	315	397	325	399
Liver weight (g)	5.82	3.95	3.88	3.72	4.94	3.93
Gonad weight (g)	0.09	0.08	0.10	0.53	0.46	0.37
GSI (gonad weight/fish weight)	0.02	0.03	0.03	0.13	0.14	0.09

GSI = Gonadosomatic index

Product Number	Product Description	Amount	Protein content
RTL-S9-180216	Rainbow trout S9 Fraction, mixed gender	0.5 ml	20 mg/ml

Enzyme assay results	
Assay	Enzyme activity (nM/min)
	mean ± SD
Phenacetin-O-deethylase	3.26 ± 0.58
Bupropion-hydroxylase	0.52 ± 0.05
Diclofenac 4'-hydroxylase	41.1 ± 5.8
Bufuralol 1'-hydroxylase	0.63 ± 0.10
Midazolam 1'-hydroxylase	1.95 ± 0.21
UDP-Glucuronosyltransferase	1,394.3 ± 230.8
Sulfotransferase	42.0 ± 2.2

Note: Activity assays were performed at PRIMACYT GmbH. The assays were conducted at 1 mg/ml protein in 0.1 M Phosphate buffer at 14 °C for 15 min (Phase I) and for 30 min (Phase II).



**Animal husbandry conditions:** After acclimation period of 2 weeks

Stocking rate (kg/m <sup>3</sup> )	10.9 ± 2.0
Water temperature (°C)	13.9 ± 0.9
pH	8.0 ± 0.1
NH <sub>4</sub> (mg/ml)	0.0 ± 0.0
NO <sub>2</sub> (mg/ml)	0.1 ± 0.08
NO <sub>3</sub> (mg/ml)	53.6 ± 14.6
CaCO <sub>3</sub> (mg/l)	167.3 ± 14.7
Salinity (‰)	0.31 ± 0.02

**Store at -80 °C.**

This product should be considered as potential biohazard. Only intended for *in vitro* use.

Datasheet updated July 09, 2020

Issued by: J.Krinitckij

Checked by: A. Ullrich